



PLANES



The House



The House



The House



The House

182-185
1-47



C66-71
2.13



C34-37
7.60



232-236
3.15



93-95
.19





1030-1031
60



0171-176
2.50



265-269
2.35



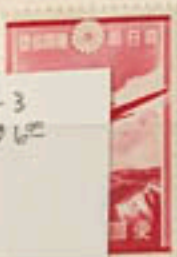
0210-218
3.05

3



C74
1.50

B1-3
86



3073-3079
1.52



C16-18
2.70

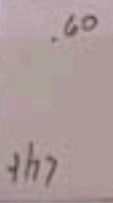
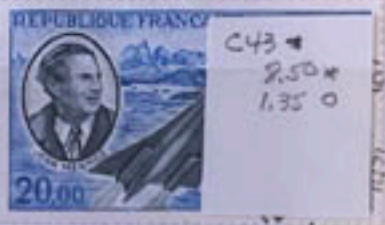
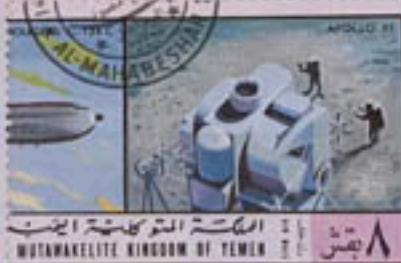


C471-479
2.15



CE4
35





5



125.00

150.00

1961 = 6,-



024764
1.50

660
1.92



C11
2.50

1.50

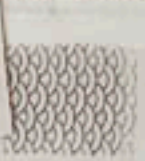
391-82
1.05



C51-53
1.18
315A C



1181
1.20



1183
1.14 ?



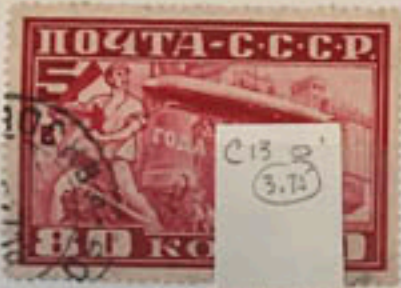
1.25



474
1.10

C177
0.14





C13
3.75



C21 or
C25
1.25



C22
2.50



C53-57
3.40



C12, 13
1.50

90



S09-513
Incomp
35



C69-73
1.50
3.75

7



1587-88
15
30



C332
40



1158-59
15
10 Comp



C4
50



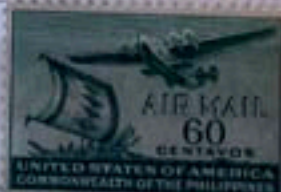
C178-179
8925



C325-26
8195



C47-48
12



C59-62
470





1178-79
19



32-35
123



1184
30



587-597
30



1180
12



1182
20



246
40



491-92
1.50



28
10



230-31
80

9



C7
10



C78
1



C1, C3
40

MCI
10



C41
10

C36
30



C18
10



C19
45



C116
20



C193-94
30



C1-4
465



C107
(.40)



C167
(.20)



C18
(.25)



C193
(.15)

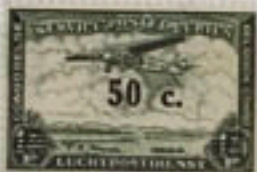


C164
(.08)

C16
(.25)



C17
(.40)



C2
(.10)



C10
(.50)



C11
(.10)



C25
(.12)



1040-43
10 cent
(.70)



C47
(1.50)



C45
(1.50)



C75
.6

C3A
C3C
(16)



J48
(06)
J51
(10)

J42
(10)



C1-3
C5
(40)



C28-30
(36)



CB 1
(2.40)

C76B
(1'50)

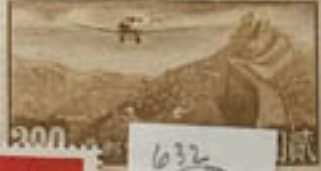


C230-240
(42)





631-37
C 35.40
(71)



2
(65)



632
(75)



C9, C9
(85)



20.15
85.10



C6 (10)
C9 (15)
C10 (15)
C13 (20)

448-451
(62)



5

13

263, 264
266, 267
(3)



4c St. Lucia



5c St. Lucia



10c St. Lucia

.25



5c St. Lucia



251-53

(90)



251-53
11/27/75

.65

111-112

(2.25)



C 121
(2.50)

C 121
4/5/75

938

(35)



.35



374-376

(1.74)



1.00



پست ایران



574
(10)

468-470

(1.35)



International Women's Year

National Women's Year

International Women's Year

National Women's Year

International Women's Year

National Women's Year

International Women's Year

National Women's Year



Seychelles 10c



Seychelles 15c



Seychelles 20c



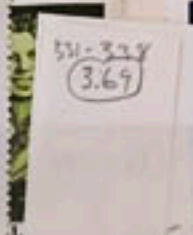
Seychelles 25c



Seychelles 65c



Seychelles 1.50



Seychelles 1.50



Seychelles 1.50

331-328
3.69



ALEXANDER FLEMING 1881-1955



ANDRE MAMBA



CLEMENT ADER 1840-1895

25
26
20



FRANCE 130



PILIPINAS 95



PILIPINAS 95

A674

950

1275-76
84



NEW ZEALAND 10

C53-54
1.20

304
35



NEW ZEALAND 4

282
06



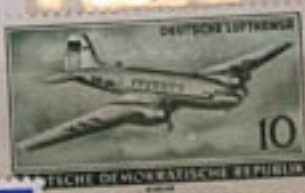
PILIPINAS 1.05

1287-88
1.05



PILIPINAS 1.50

281
104



DEUTSCHE DEMOKRATISCHE REPUBLIK 10

8266
27

208-210
1.75



Fiji 1



Fiji 3



Fiji 6



DEUTSCHE DEMOKRATISCHE REPUBLIK 20

15

Black on 500fr airmail
Concorde design

GABON—Dec. 29: Concorde
First Flight, 500-franc airmail,
ending globe
graver Quillivic;
Stamp Printing Of-
fice.
Concorde First
Flight: Overprint
text "1er Vol
de Concorde"



C172
12/29/75
500

C173
1000

700

3.95



see
C121
500



C267 259
11/8/75

Dec. 8: Birth Centenary of Cle-
ment Ader, 100fr, portrait of the
air pioneer, flying machine.
Designer, engraver Combet;
recess, French Stamp Printing Of-
fice.



C268 270
11/2/76
300

200

MALI—Jan. 21: Concorde First
Commercial Flight, 500-franc air-
mail, Concorde in flight. Designer,
Chesnot; offset, Editions Edila.

EAST AFRICA—Jan. 2: 30th
Anniversary of East African
Airways: Various
aircraft, 50
Friendship at Na-
Kenya; 1 shilling
Kilimanjaro Airpo-
2/-, Super VC-10 at
port, Uganda; 3/-.
Airways crest a
design. Devo, fro
missions.

320-323
11/2/76
1.95



MALDIVE ISLANDS—Novem-
ber: Tourism, 4 laree, map of the
Maldives; 5l, motor cruiser and
small craft; 7l, yacht race; 15l,
deep sea divers and coral; 3 rupee,
Hululu Airport and DC-3 aircraft
of Air Maldives; 10re, cruise
boats. Designer, M. Shamir;
offset, Questa Colour.



50th Anniversary of Lufthansa Airline, 50pf, Junkers F-13 monoplane (in service 1926-1939). Designers, H. and H. Schilling; offset, Federal Printing Office, Berlin.



1207 (90)
1/5/76
(205, 1206, 911334)
at (163)
at 1/40

SENEGAL—Dec. 20: 200th Anniversary of U.S., 250 francs, Boston Massacre; 500fr, Siege of Yorktown. Designer, engraver J. Corbet; recess, French Stamp Printing Office.

Jan. 5: Human Rights/Namibia Conference, 125fr, map of Africa, text, Human Rights emblem. Designer, engraver J. Corbet; photogravure. Designer, J. Corbet; Editions de la République



C129
(440)
2.50



C143
(300)
2.50

Concorde First flight, 300fr, Concorde Designer, J. Corbet, Editions de la République



223
(400)
3.50



204
(400)
3.00

FRANCE—Jan. 12: First Commercial Flight of Concorde, 1.70 francs, aircraft in flight. Designer, P. Lengella, engraver, P. Forget; recess, Stamp Printing Office, Paris; offset, Amélie.

C 48
1/10/76
(.95)



75



C 59
(500)
375



C69
(625)
5.25



705.40
(.22)
4/77



1425
(200)
125

7662
(163)



115



- ⊙
- ⊙
- ⊙
- ⊙

12.50



- ⊙
- ⊙
- ⊙
- ⊙



- ⊙
- ⊙
- ⊙
- ⊙



- ⊙
- ⊙
- ⊙
- ⊙



- ⊙
- ⊙
- ⊙
- ⊙



- ⊙
- ⊙
- ⊙
- ⊙



MALAGASY REPUBLIC -
 March 3: 75th Anniversary of the
 First Zeppelin Flight, 40 francs,
 50fr, 75fr, 100fr, 200fr, 300fr and
 450fr souvenir sheet, design and
 production details incomplete.

300



500



29

SP76v Spain Sanabria 85c Mint
 1930 Lindbergh Head Omitted
 Net \$2.50
 Only 500 exist



228
 (45)

מקדו"ש ל 7א"ל



119771

DEDICATED TO EL AL ISRAEL AIRLINES



SANAB
 247
 (10)

ria 251 Mint
 \$5.00



53 Unused
 (Cat \$10)
 00



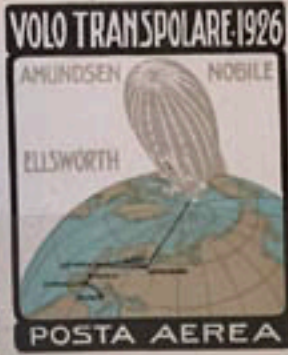
SP76v
 1930 L
 Only 30

SANAB
 18c
 (152)

(55)
 4 31
 9 445

IT18 Italy Sanabria S3
1926 Trans Polar Cpl

GE20 Germany #059-60 Mint
1938 Zeppelin Cpl \$1.65



503
1.25
SANAB



C127
2.50
225

Enlaces y Ahora

5c



NICARAGUA

Enlaces y Ahora

5c



NICARAGUA

1037
103



565-570
SANAB
.50





375



IA IA IA IA

IB IB IB IB



IA IA IA IA

IA IA IA IA



IA IA IA IA

495

IA IA IA IA



Concorde



Prix de Vente : 600 F

CATÉGORIE :

Transport supersonique

CONSTRUCTEUR :

British Aircraft Corporation - Aérospatiale

CARACTÉRISTIQUES :

envergure : 25,60 m

longueur : 62,17 m

hauteur : 12,19 m

CAPACITÉ :

passagers + équipage : 108 à 144 + 3

charge offerte : 12 740 kg

PROPULSEURS :

nombre : 4

type : Rolls-Royce/Snecma Olympus 593

PERFORMANCES :

v. croisière : Mach 2,05

v. maximale : Mach 2,2

v. ascensionnelle : 25,4 m/sec.

rayon d'action : 6 200 km

plafond : 18 300 m



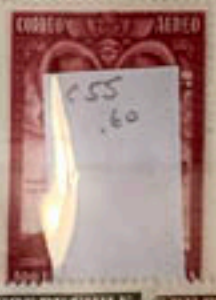
250-52
60



254
256
1.20



255
257



255
60



6109
6123
1255 6121
3.35





C54-68
12.05



299-
314
2.85



C 272
1.30



356-75
351
1.00



742-47
2.52



275



366

504
C143

AUI Austria #632 Mint 75
1958 Austrian Airlines Cpl 60¢

632
75



25 C633

6/77

2
1342

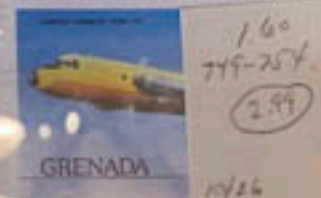
.75 1062
95

6/77



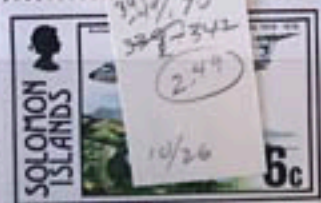


1.60
7.55
3.20
10/26



1.60
749-254
2.99
10/26

1.25
367-70
1.89
10/26



342/95
342-342
2.49
10/26





450
C232a
(650)
14/26



3,75
C232
(500)
14/26

750



4/17



4.95





Handwritten notes: 63/77



Handwritten notes: 3/77

Handwritten notes: 45, 8193 (6), 8/77



Handwritten notes: 2.10, 450-453, 100, 8/77



Handwritten notes: 70, C 49, 95, 8/77



50^e ANNIVERSAIRE DE LA TRAVERSEE DE L'ATLANTIQUE PAR CHARLES LINDBERGH



20 MAI 1927



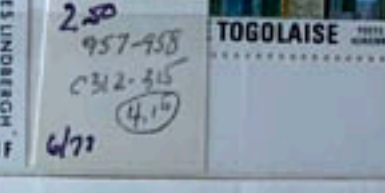
.20
908 (24)

1/77



3,00
C 302-303
(34)

1/77



19.95

1/77

2.50

2.50
957-958
C 312-315
(4.15)

1/77



50 Years of Airmail in Trinidad & Tobago



.95



168-71
1.50

6/77



3.95



60F



5.75

8/77

2A



7.50
245-250
10.90
8/77

Jan 1.75



1.00
769-771
1.10
8/77

Mar .35



