

SH290906--LS

\$25.00

In Washington Fourth Bureau 1929 U.S.S. Utah  
Type 8 American Flag Type A14 BB 51 to Brooklyn,  
N.Y. Captured after being struck by Japanese  
aircraft torpedoes at Pearl Harbor Dec. 7, 1941.  
Her masthead bulk remains a memorial at Pearl  
Harbor. Crosses. LEGAL SIZE.



The Navy Savings Bank,  
83 Sands Street,  
Brooklyn,  
New York.

SH381214

\$10.00

3c Navy 1918 U.S.S. West Virginia San Pedro Type  
1 BB 48 to New York, N.Y. EUROPEAN SIZE



Mr. & Mrs. John Yuckus  
29 Henry Street  
New York City  
N.Y.

SH280724

\$15.00

2c Washington Fourth Bureau 1928 U.S.S.  
California Type 7 BB 44 to Los Angeles, Calif.



**NATIONAL ART NOVELTY CO.**

**701 to 709 Merrill Avenue**  
(Formerly East 63rd Street)

**LOS ANGELES, CALIF.**

77c

U.S.S. California



1932

Mr. John W. Willy  
County Assessor's office  
Court House  
Stockton, Calif

SH320614--LS

\$15.00

Navy Dept. Marine Detachment, USM Oklahoma  
Postdy 1917 U.S.S. Oklahoma San Pedro,  
California Type 1 BB 17 to Washington, D.C.  
LEGAL SIZE

PENALTY FOR PRIVATE USE TO  
AVOID PAYMENT OF POSTAGE \$300

U. S. S. OKLAHOMA  
C/O Postmaster  
SAN FRANCISCO, CALIF.  
OFFICIAL BUSINESS



THE QUARTERMASTER,  
HEADQUARTERS, U.S. MARINE CORPS,  
WASHINGTON, D. C.

SH320322--LS

\$10.00

Navy Department U.S.S. California Penalty 1912  
U.S.S. California Type S BB 44 to Washington,  
D.C. LEGAL SIZE

U. S. S. CALIFORNIA  
San Pedro, California  
The Commanding Officer

OFFICIAL BUSINESS

PENALTY FOR PRIVATE USE TO  
AVOID PAYMENT OF POSTAGE \$300



THE CHIEF OF THE BUREAU OF ENGINEERING  
WASHINGTON

DC

SH301030--LS

\$10.00

New Dept. Penalty 1930 U.S.S. West Virginia Type  
6 BB 45 to Los Angeles, Calif. LEGAL SIZE

PENALTY FOR PRIVATE USE TO AVOID  
PAYMENT OF POSTAGE, \$300



G.G.Voege Company  
700 Metropolitan Bldg  
Los Angeles, California.

SH370415--LS

\$10.00

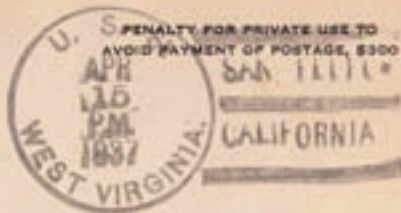
Navy Dept. Penalty 1917 U.S.S. West Virginia San  
Pedro California Type 1 BB 48 to San Diego, Calif.  
LEGAL SIZE

NT

ing

U. S. S. WEST VIRGINIA  
Care Postmaster, San Pedro, California

OFFICIAL BUSINESS



WELLMAN, PECK AND CO.,

808 "J" St.,

San Diego, Cal.



SH330401--LS

\$10.00

Navy Department U.S.S. Nevada Penalty 1933  
U.S.S. Nevada Type U.S. 8B 16 to Washington,  
D.C. LEGAL SIZE

U. S. S. NEVADA  
Care of Postmaster  
San Pedro, Calif.

OFFICIAL BUSINESS



RENTALY FOR PRIVATE USE TO  
AVOID PAYMENT OF POSTAGE, \$300

Bureau of Engineering,  
Navy Department,  
Washington, D.C.



SH320211A--LS

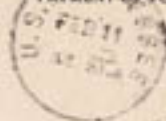
\$10.00

Navy Dept. Penalty 1917 U.S.S. Tennessee Type 6  
BB 41 in Brooklyn, N.Y. LEGAL SIZE

MENT

U. S. S. TENNESSEE  
CARE OF POSTMASTER  
SAN PEDRO, CALIFORNIA  
OFFICIAL BUSINESS

PENALTY FOR PRIVATE USE TO AVOID  
PAYMENT OF POSTAGE, \$300.



Editor

Our Navy

191 Joralemon Street

Brooklyn, N.Y.

SH300419C--LS

\$10.00

Navy Dept. Penalty 1910 U.S.S. Treasurer: Type 4  
BB 41 to Washington, D.C. Tear at top. LEGAL  
SIZE

PENALTY FOR PRIVATE USE TO  
AVOID PAYMENT OF POSTAGE \$300



1930

BUREAU OF NAVIGATION  
NAVY DEPARTMENT  
WASHINGTON, D. C.

SH320409--LS

\$10.00

Navy Dept. Postage 1912 U.S.S. Pennsylvania U.S.  
Fleet Concentration Type F (P-15) BB 48 ss  
Washington, D.C. LEGAL SIZE

Care of Postmaster, San Pedro, Calif.

OFFICIAL BUSINESS

BUREAU OF MEDICINE AND SURGERY,  
NAVY DEPARTMENT,  
WASHINGTON, D. C.



RECEIVED  
MAY 9 1932  
NAVY DEPT  
WASHINGTON

SH321113--LS

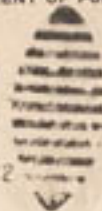
\$10.00

Navy Dept. Penalty 1951 U.S.S. Maryland Type 4  
BB 46 to Washington, D.C. LEGAL SIZE

U. S. S. Maryland, Flagship  
San Pedro, California

OFFICIAL BUSINESS

PENALTY FOR PRIVATE USE TO  
AVOID PAYMENT OF POSTAGE \$300



1532

The Chief of The Bureau of Navigation  
Navy Department  
Washington, D.C.