

PRIMERA EXPOSICION FILATELICA CENTRO-AMERICANA
 EN GUATEMALA. DEL 20 AL 27 NOV. 1938



CONFRATERNIDAD CENTRO-AMERICANA

HOMENAJE
 A LOS
 ESTADOS UNIDOS DE NORTE AMERICA

1787 — 1789



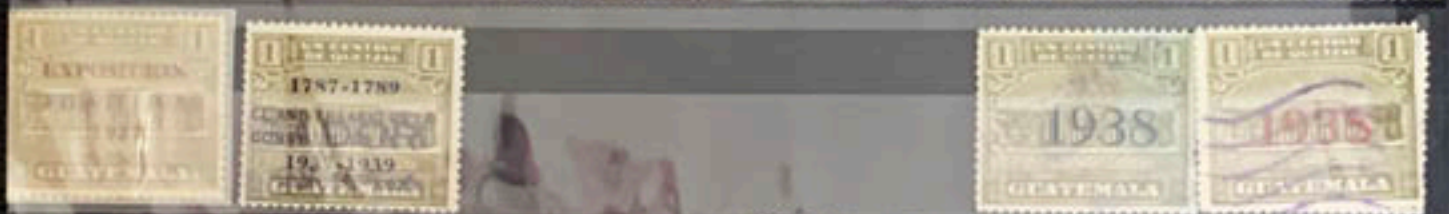
1937 — 1939

EN EL
 CL ANIVERSARIO
 DE SU CONSTITUCION POLITICA

Pg 35 1837-1890
01-5 #01 - #02 (DBT)
31.50

2603
ALL
GOLDWILK
C# 10/11

MAY 06-12 1929 "OFFICIALS"



Pg 37 1945-1998
Scott #



P339 2053-2100
C033 to C055



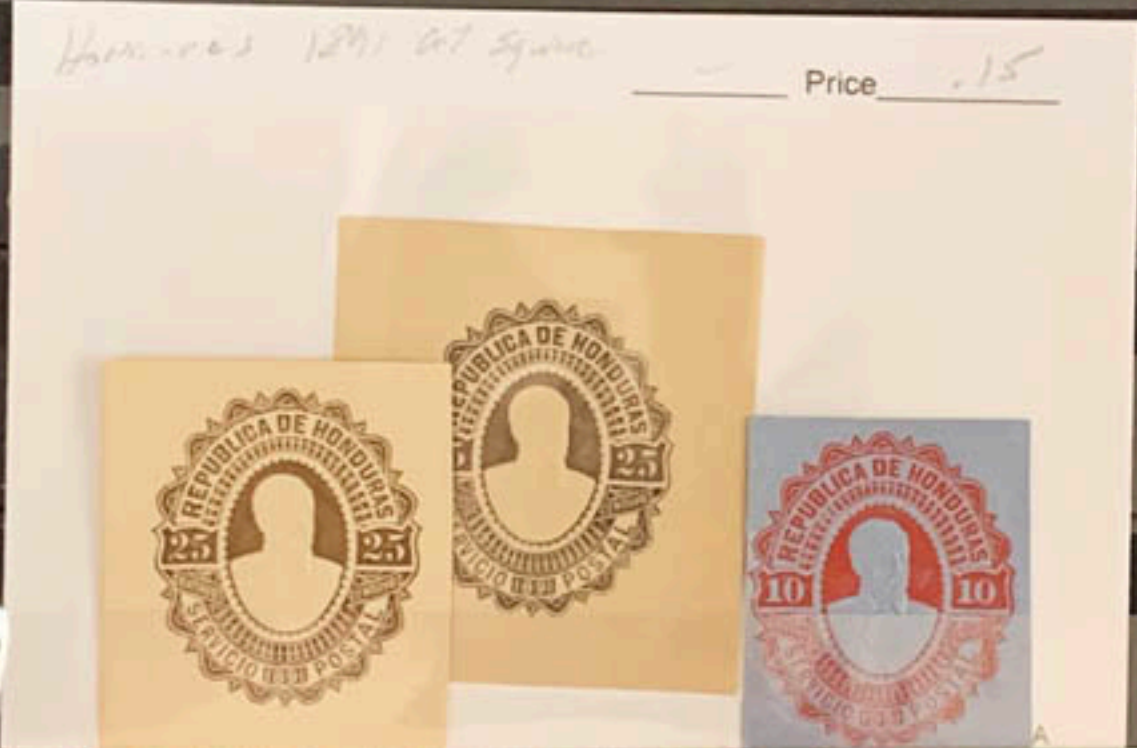
CBI-4 L

2603

3.60

19-22





23 107-162
73-182



1915





Pg 15 151-810
Scott # C105-C152



HONDURAS C120-127 142 GEN. MORAÉN



* HONDURAS C124-07
CONT.



Pg. 17 86-918
Scott # C194-C249

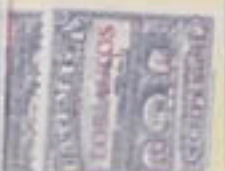


Fig 10 481-540
Scott #232-#282



*GUATEMALA 247-251 1930 LOS ALTOS RAILWAY OPENING

*GUATEMALA 252-254 1930 "LOS ALTOS ELECTRIC RAILWAY"



*GUATEMALA 259-263 1933 "DA"

*GUATEMALA 264-272 1935 GENERAL BRADOS (1935)

*GUATEMALA 269-272 CONT



*GUATEMALA 273-276 1935 LAKE-GUSTAVO LEONARDO BUILDING

*GUATEMALA 278-279 1936 DRINKING WATER



*SALVADOR C69-70 1940 *SALVADOR C71-72 1940 PAN-AMERICAN UNION - 50TH ANNIVERSARY

*SALVADOR C73-77 1940 COFFEE



*SALVADOR C80-81 1944 SURCHARGES



*SALVADOR C92 1944 CUCKER

*SALVADOR C93-95 1944 NATIONAL BUILDINGS

*SALVADOR C97-98 1946 URIARTE



#C104 is in back of book.

*SALVADOR C111-116 1948 ROOSEVELT



#C117 is in back of book