





PERFORATED 12





GRILLED



WITHOUT GRILL





SOFT POROUS PAPER

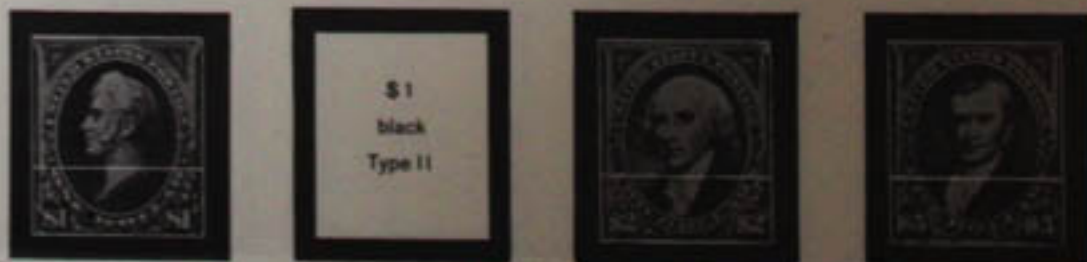


RE-ENGRAVED









WATERMARKED USPS



\$1
Type II







WATERMARKED USPS



IMPERFORATE





IMPERFORATE







2 c
carmine
imperf.

2 c
carmine
bluish
paper



2 c
carmine
imperf.



2 c
carmine
imperf.

WATERMARKED USPS



5 c
blue

6 c
redorange

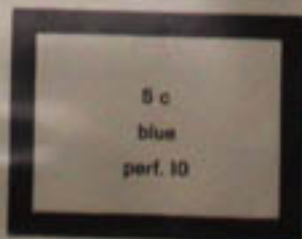
8 c
olivegreen



15 c
ultramarine



PERFORATED 10



PERFORATED 12 WATERMARKED USPS



PERFORATED 8 1/2 HORIZONTALLY

IMPERFORATED

PERFORATED 8 1/2 VERTICALLY



PERFORATED 11 1/2



WATERMARKED USPS





PERFORATED 11 x 10



PERFORATED 10 x 11



PERFORATED 11 x 10

PERFORATED 10







IMPERFORATE



PERFORATED 11 x 10



PERFORATED 10



PERFORATED 10 VERTICALLY



PERFORATED 10 HORIZONTALLY



IMPERFORATE



PERFORATED 11



PERFORATED 10

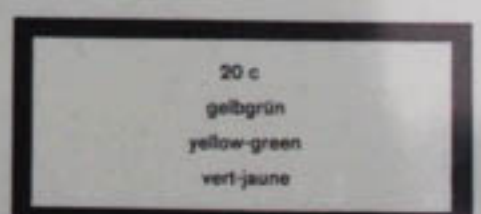




IMPERFORATE



PERFORATED 11 x 10 1/2







PERFORATED 11 x 10 1/2



UNDER AUTHORITY OF JAMES A. FARLEY, POSTMASTER GENERAL AT A CENTURY OF PROGRESS



PRINTED BY THE TREASURY DEPARTMENT, BUREAU OF ENGRAVING AND PRINTING

IN COMPLIMENT TO THE AMERICAN PHILATELIC SOCIETY FOR ITS CONVENTION AND EXHIBITION

CHICAGO, ILLINOIS, AUGUST 1933. PLATE NO. 21160

OF LOCAL PRINTING
WITHOUT GUM

