

24211



WASHINGTON 1800-1950



24244

WASHINGTON
NATIONAL CAPITAL
SESQUICENTENNIAL



HONORING RAILROAD ENGINEERS OF AMERICA



U. S. POSTAGE



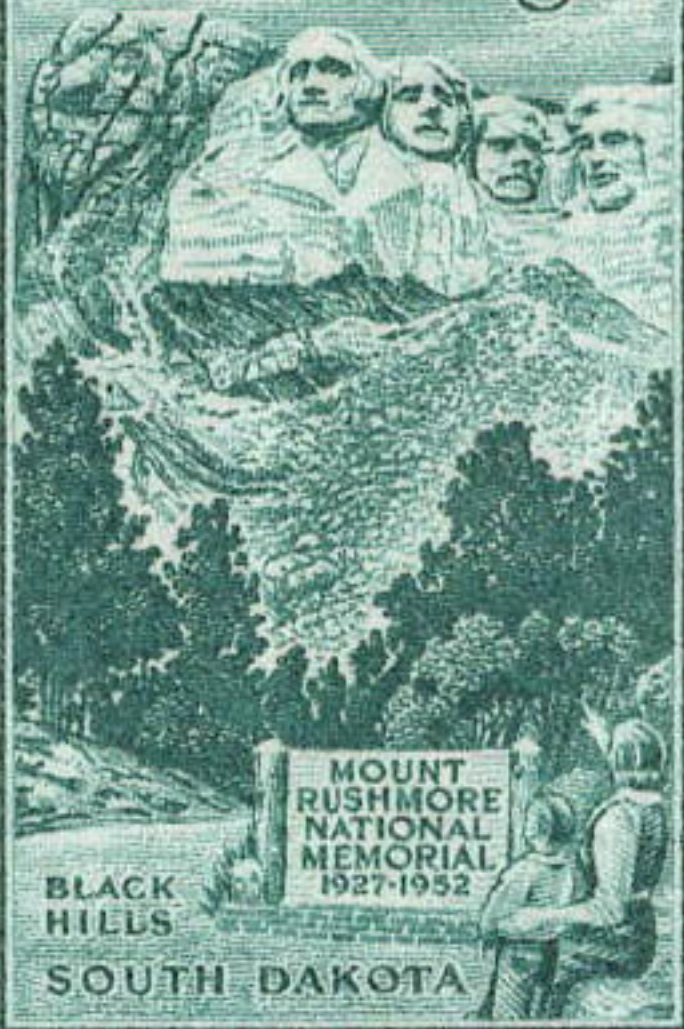
CALIFORNIA
CENTENNIAL
OF STATEHOOD
1850 1950



24260



U.S. POSTAGE 3¢



BLACK
HILLS

MOUNT
RUSHMORE
NATIONAL
MEMORIAL
1927-1952

SOUTH DAKOTA















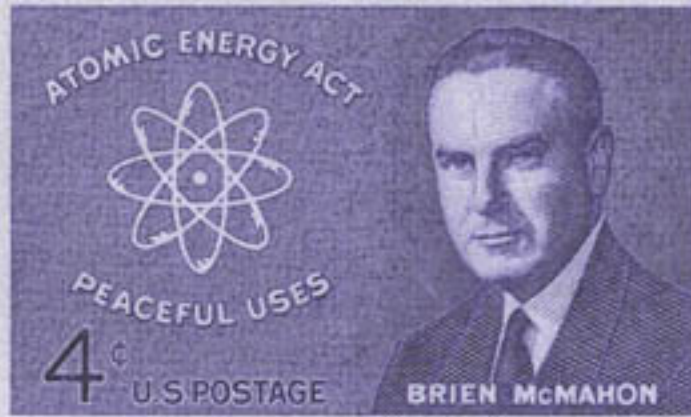


NATIONAL APPRENTICESHIP PROGRAM
4c
UNITED STATES



CHARLES EVANS HUGHES
1862 1962

4c U.S. POSTAGE



4c U.S. POSTAGE

BRIAN McMAHON