

# AIR POST STAMPS

1918

Unwatermarked  
Perforated 11



1923



12.50



60



(C1)

65.00

1926-27



1927



14



1928

12.50



14

10.00

1930



(C13)



(C15)

14  
50

# AIR POST STAMPS

Unwatermarked  
Rotary Press Printing  
Perforated  $10\frac{1}{4} \times 11$

1931



NY  
17.50

1932



NY  
3.75

1933  
Flat Plate Printing  
Perforated 11

Century of Progress Issue



✓

1934

Rotary Press Printing  
Perforated  $10\frac{1}{4} \times 11$

45"



3.50

1935

Flat Plate Printing  
Perforated 11

Trans-Pacific Issue



1.40

1937



10"



10"

# AIR POST STAMPS

1938

Unwatermarked  
Flat Plate Printing  
Perforated 11



.70

1939

Trans-Atlantic Issue



024  
AIR

1941-44

Rotary Press Printing  
Perforated 11x10½



15.70

# AIR POST STAMPS

1978-83

Wright Brothers

Octave Chanute

Wiley Post



1.70

Olympic Games Issue



1.40

Blanche Stuart Scott



1.50

Philip Mazzei



.20



.78



.60

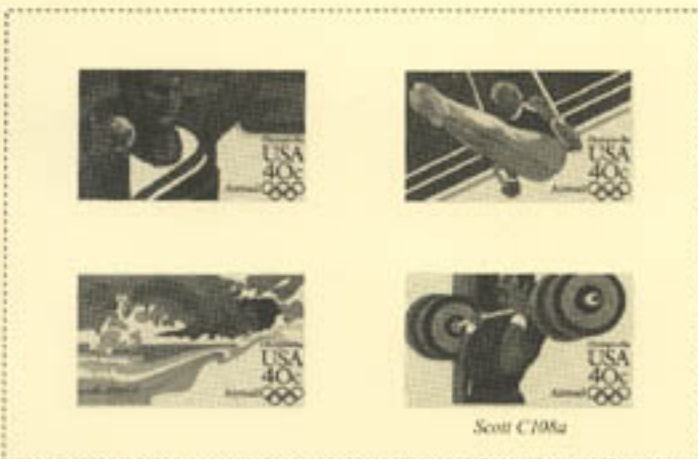
Olympics



.65



4.25



Scott C108a



4.25

# SPECIAL DELIVERY

Unwatermarked  
Perforated 12

1885

1888

1893

1894



Watermarked **USPS**  
Perforated 12

1895

1908

1902



Watermarked **USPS**

Perforated 12

Perforated 10

1911

1914



Unwatermarked

Perforated 10  
1916

Perforated 11  
1917

Perforated 11  
1922



50

1927

Perforated 11  
1925

Rotary Press Printing  
Perforated 11x10 1/4



40

2.00

1.40

# SPECIAL DELIVERY

Unwatermarked

Perforated 12

1885

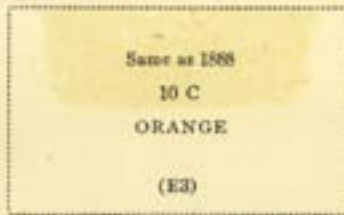


1888



(E2)

1893



(E3)

1894



Same as 1888  
with line under  
"TEN CENTS."  
10 C  
BLUE  
(E4)

Watermarked USPS

Perforated 12

1895



1908



1902



12.50 0

Watermarked USPS

Perforated 12

Perforated 10

1911

1914



Same as 1902  
10 C  
ULTRAMARINE  
(E8)



Same  
10 C  
ULTRAMARINE  
(E9)

Unwatermarked

Perforated 10

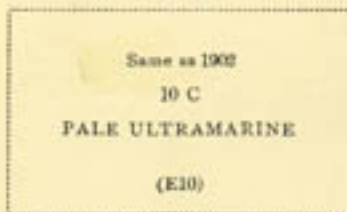
Perforated 11

Perforated 11

1916

1917

1922



Same as 1902  
10 C  
PALE ULTRAMARINE  
(E10)



175



46  
45.00

1925

1927

Perforated 11

Rotary Press Printing

Perforated 11x10 1/2



40



2



1

# POSTAGE DUE

1916

Unwatermarked  
Perforated 10

Same	2 C
1 C	ROSE
ROSE	
(J59)	(J60)

1917-23

Unwatermarked  
Perforated 11

Same	2 C	3 C	5 C	10 C	30 C	50 C
1 C	CARMINE	CARMINE	CARMINE	CARMINE	CARMINE	CARMINE
CARMINE	ROSE	ROSE		ROSE	ROSE	ROSE
ROSE						
(J61)	(J62)	(J63)	(J64)	(J65)	(J66)	(J67)

1925

1/2 C
DULL RED
(J68)

1930-31

Perforated 11



NH 950

NH 625

NH 950

NH 9750

NH 4750

2-



3750 NH

30 C
CARMINE
(J76)

\$5
CARMINE
(J78)

# POSTAGE DUE

Unwatermarked

1931-36

Rotary Press Printing

Perforation 11x10½, 10¼x11



1959



Straight Numeral in Outline	\$5
\$1	CARMINE
CARMINE	ROSE AND
ROSE AND	BLACK
BLACK	
(J100)	(J101)



# Perforated 12 Stamps Series of 1871 Violet Paper



1c Washington



2c Washington



3c Washington



4c Washington



5c Washington



6c Washington



10c Washington

# Perforated Stamps Series of 1875-81 Silk Paper



1c Washington



2c Washington



3c Washington



4c Washington



RB16a  
BLACK

5c Washington



RB17a  
VIOLET BLUE

6c Washington

# Perforated Stamps Series of 1875-81 Double Watermarks



1c Washington



2c Washington



3c Washington



4c Washington



4c Washington



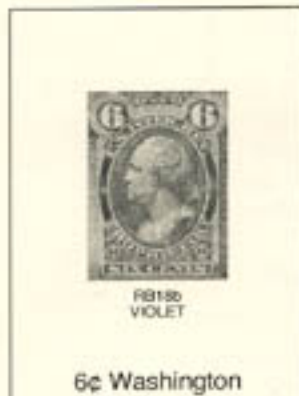
RB18B  
BLACK

5c Washington



RB17B  
VIOLET BLUE

6c Washington



RB18D  
VIOLET

6c Washington



RB19D  
BLUE

10c Washington

5/31

# Rouletted 5½ Perforated Stamps

## Series of 1898

### Double Watermark



1/8c BattleShip



1/4c BattleShip



3/8c BattleShip



5/8c BattleShip



1c BattleShip



1c BattleShip



1c BattleShip



2c BattleShip



2½c BattleShip



RB29  
OLIVE GRAY

3c BattleShip



4c BattleShip



RB31  
BROWN ORANGE

5c BattleShip

# Hyphen Hole Perforated 7 Stamps Series of 1898



1/8c Battleship



1/4c Battleship



RB22p  
DEEP ORANGE

3/8c Battleship



5/8c Battleship



RB24p  
DARK GREEN

1c Battleship

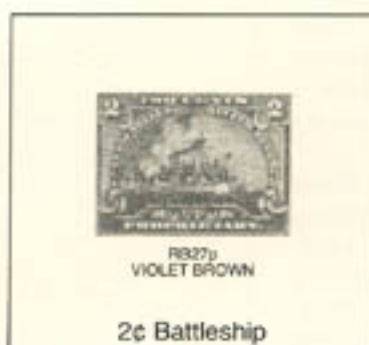


1 1/8c Battleship



RB26p  
DULL BLUE

1 1/8c Battleship



RB27p  
VIOLET BROWN

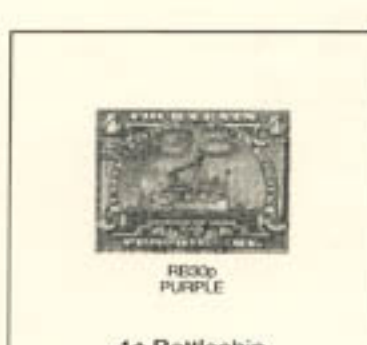
2c Battleship



2 1/8c Battleship



3 1/8c Battleship



RB30p  
PURPLE

4c Battleship



5c Battleship

# Perforated 10 Stamps Series of 1914 Single Watermark, Offset Printing

