

# POSTAGE

## General Issues

Printed by Rawdon, Wright, Hatch & Edson

1847

Imperforate



1875

Reproductions of Issue of 1847

Produced by the U. S. Bureau of Engraving and Printing

Imperforate



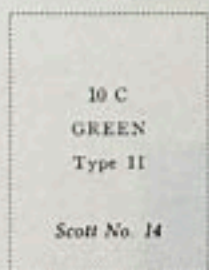
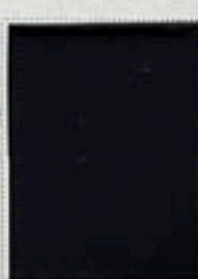
Printed by Toppan, Carpenter, Casilear & Co.

1851-56

Imperforate



*Handwritten note:* 1851-56



*Handwritten note:* 34

# POSTAGE

Printed by Toppan, Carpenter & Co.

1857-61

Perforated 15

Same Designs as  
1851-56 Issues

1 C  
BLUE  
Type I  
Scott No. 18

1 C  
BLUE  
Type Ia  
Scott No. 19

1 C  
BLUE  
Type II  
Scott No. 20

1 C  
BLUE  
Type III  
Scott No. 21

1 C  
BLUE  
Type IIIa  
Scott No. 22

1 C  
BLUE  
Type IV  
Scott No. 23



5 C  
BRICK  
RED  
Type I  
Scott No. 27

5 C  
RED  
BROWN  
Type I  
Scott No. 28

5 C  
INDIAN  
RED  
Type I  
Scott No. 28A

5 C  
BROWN  
Type I  
Scott No. 29



Scott No. 30

5 C  
BROWN  
Type II  
Scott No. 30A

10 C  
GREEN  
Type I  
Scott No. 31

10 C  
GREEN  
Type II  
Scott No. 32

10 C  
GREEN  
Type III  
Scott No. 33

10 C  
GREEN  
Type IV  
Scott No. 34

10 C  
GREEN  
Type V  
Scott No. 35

12 C  
BLACK  
Scott No. 36



Scott No. 37



Scott No. 38

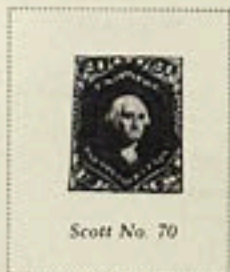
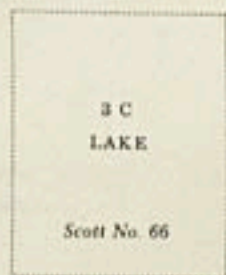


Scott No. 39

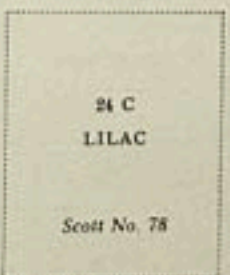
1124  
6289

# POSTAGE

1861-62  
Second Issue



1861-66



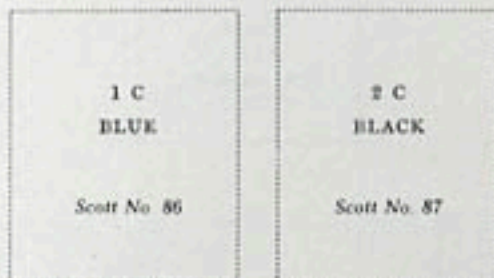
# POSTAGE

Printed by the National Bank Note Co.

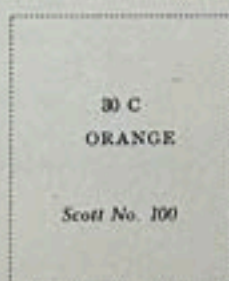
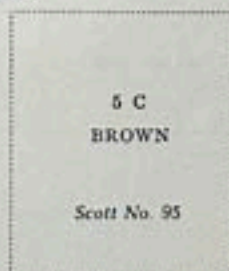
1867

Same Designs as 1861-66 Issues  
Embossed with Grills of Various Sizes  
Grill with Points Down

E. Grill measuring about 11x13 mm.



F. Grill measuring about 9x13 mm.



99a

595

# POSTAGE

Printed by the National Bank Note Co.

1869

With Grill



*Hand  
cancel*



Scott No. 118



Scott No. 120



Scott No. 121



Scott No. 122

# POSTAGE

Printed by the National Bank Note Co.

1870-71

With Grill



Scott No. 137



Scott No. 138



Scott No. 139



Scott No. 140



Scott No. 141



Scott No. 142



Scott No. 143



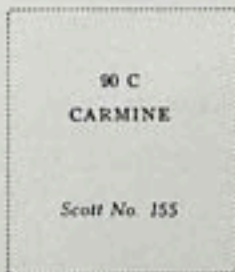
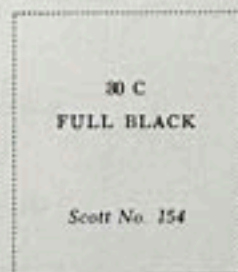
Scott No. 144

# POSTAGE

Printed by the National Bank Note Co.

1870-71

Without Grill



# POSTAGE

Printed by the Continental Bank Note Co.

1873

Same designs as issue of 1870-71 but with secret marks on the values from 1c to 15c



7 C  
ORANGE  
VERMILION  
  
Scott No. 160



30 C  
GRAY BLACK  
  
Scott No. 165

90 C  
ROSE CARMINE  
  
Scott No. 166

1875



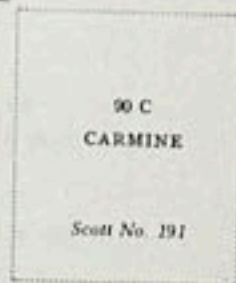


# POSTAGE

Printed by the American Bank Note Co.

1879

Soft Porous Paper



1882



1881-82

Designs of Issue of 1873 Re-engraved



1883



# POSTAGE

Printed by the American Bank Note Co.

1887



1888

Same as  
1870-83 Issues  
4 C  
CARMINE  
Scott No. 215



90 C  
PURPLE  
Scott No. 218

1890-93



110.00  
MH



30.00

THW



THW

565

POSTAGE

Printed by the American Bank Note Co.

Columbian Exposition

1893



Scott No. 241



Scott No. 242



Scott No. 243



Scott No. 244



Scott No. 245

231 C  
BROKEN MAT

# Columbian Exposition

1893



Scott No. 241



Scott No. 242



Scott No. 243



Scott No. 244



Scott No. 245

231 C  
BROKEN MAT

# POSTAGE

Unwatermarked

Engraved

1894



247



Scott No. 261

\$1  
BLACK  
Type II

Scott No. 261 A



Scott No. 262



Scott No. 263

341

# POSTAGE

Watermarked **USPS**

1895



\$1  
BLACK  
Type I  
Scott No. 276

\$1  
BLACK  
Type II  
Scott No. 276A

\$2  
DARK BLUE  
Scott No. 277

\$5  
DARK GREEN  
Scott No. 278

POSTAGE

Watermarked USPS

1898

*7/11/98*



# POSTAGE

Watermarked USPS

1898

## Trans-Mississippi Exposition Issue



Scott No. 291



Scott No. 292



Scott No. 293



# POSTAGE

Watermarked **USPS**

1901

Pan-American Exposition Issue



# POSTAGE

## Watermarked USPS

1902-03

Perforated 12



Scott No. 312



Scott No. 313



1906-08

Imperforate



# POSTAGE

Watermarked **USPS**

1904

Louisiana Purchase Exposition  
MNH



1907

Jamestown Exposition  
PNS



1909

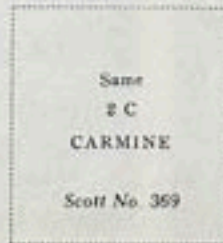
Perforated 12

Alaska-Yukon  
Pacific Exposition

Lincoln Memorial

Hudson-Fulton

On Bluish Paper



Same  
2 C  
CARMINE

Scott No. 359

Imperforate



28

# POSTAGE

Watermarked USPS

1908-09

Perforated 12

MH



12  
VIOLET  
BROWN  
Scott No. 342

Watermarked USPS

1910-11

Perforated 12



# POSTAGE

## Watermarked USPS

1908-09

Imperforate



Type 1  
3 C  
DEEP  
VIOLET

Scott No. 345

4 C  
ORANGE  
BROWN

Scott No. 346

5 C  
BLUE

Scott No. 347

## COIL STAMPS

1908-10

Perforated 12 Horizontally



4 C  
ORANGE  
BROWN

Scott No. 350

5 C  
BLUE

Scott No. 351

1909

Perforated 12 Vertically

1 C  
GREEN

Scott No. 352



4 C  
ORANGE  
BROWN

Scott No. 354

5 C  
BLUE

Scott No. 355

10 C  
YELLOW

Scott No. 356

POSTAGE  
Watermarked USPS

1910-11

Imperforate



COIL STAMPS

Perforated 12 Horizontally



Perforated 12 Vertically



1910-13

Perforated 8 1/2 Horizontally



Perforated 8 1/2 Vertically



# POSTAGE

Watermarked USPS

1913

Panama-Pacific Exposition

Perforated 12



(ORANGE YELLOW)  
Scott No. 400



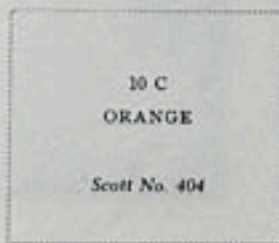
10 C  
ORANGE

Scott No. 400A

1914-15  
Perforated 10



5 C  
BLUE  
Scott No. 403



10 C  
ORANGE  
Scott No. 404

# POSTAGE

Watermarked USPS

1912-14



## COIL STAMPS



1912-14

Perforated 12



Watermarked USPS

1912





# POSTAGE

Watermarked USPS

1914-15

Perforated 10



4 C  
BROWN  
  
Scott No. 427



8 C  
PALE OLIVE  
GREEN  
  
Scott No. 431



50 C  
VIOLET  
  
Scott No. 440

Flat Plate Printing  
1915

Watermarked USPS

Perforated 10

\$1  
VIOLET  
BLACK  
  
Scott No. 460

Watermarked USPS

Perforated 11

2 C  
CARMINE  
  
Scott No. 461

**POSTAGE**  
Watermarked **USPS**

1914-16

COIL STAMPS

Flat Plate Printing

Perforated 10 Horizontally



Perforated 10 Vertically



3 C  
VIOLET

Scott No. 445

4 C  
BROWN

Scott No. 446

5 C  
BLUE

Scott No. 447

Rotary Press Printing

Perforated 10 Horizontally



1 C  
GREEN

Scott No. 448



Type I  
2 C  
RED

Scott No. 449



Perforated 10 Vertically



Type 1  
3 C  
VIOLET

Scott No. 456



4 C  
BROWN

Scott No. 457

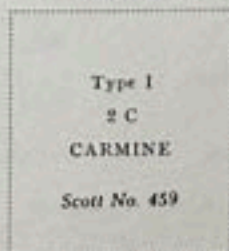


Type 11  
5 C  
BLUE

Scott No. 454



Imperforate



Type 1  
2 C  
CARMINE

Scott No. 459



# POSTAGE

Unwatermarked

1916-17

Perforated 10



8 C  
OLIVE GREEN  
  
Scott No. 470



30 C  
ORANGE  
  
Scott No. 476 A

50 C  
LIGHT VIOLET  
  
Scott No. 477



Types of  
Issue of 1903  
22  
DARK BLUE  
  
Scott No. 479

55  
LIGHT GREEN  
  
Scott No. 480

# POSTAGE

Unwatermarked  
1916-17  
Imperforate



Type Ia  
2 C  
CARMINE  
  
Scott No. 482A



482



Type II  
3 C  
VIOLET  
  
Scott No. 484

Rotary Press  
COIL STAMPS  
1916-22  
Perforated 10 Horizontally



Perforated 10 Vertically

1 C  
GREEN

Scott No. 490

Type II  
2 C  
CARMINE

Scott No. 491

Type III  
2 C  
CARMINE

Scott No. 492



5 C  
BLUE

Scott No. 496



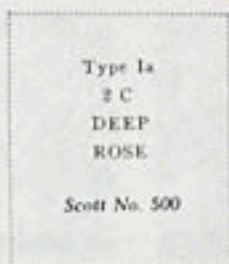
# POSTAGE

Flat Plate Printing

Unwatermarked

1917-19

Perforated 11



# POSTAGE

Unwatermarked

1918-20

Offset Printing

Perforated 11



Type VII  
3 C  
CARMINE  
Scott No. 528B

Type III  
3 C  
VIOLET  
Scott No. 529

Type IV  
3 C  
PURPLE  
Scott No. 530

Imperforate



Type IV  
2 C  
CARMINE  
ROSE  
Scott No. 532

Type V  
2 C  
CARMINE  
Scott No. 533



Type VI  
3 C  
CARMINE  
Scott No. 534A

Type VII  
2 C  
CARMINE  
Scott No. 534B



1919

Perforated 12 1/4

1 C  
GRAY  
GREEN  
Scott No. 536

# POSTAGE

Watermarked **USPS**

1917

Flat Plate Printing

Perforated 11



1919-21

Unwatermarked

Rotary Press Printing

Perforated 11x10



Perforated 10x11



Perforated 10



Perforated 11



Perforated 11



1918-20

Flat Plate Printing



# POSTAGE

Unwatermarked  
1910  
Flat Plate Printing  
Perforated 11

## Victory Issue



1920

## Pilgrim Tercentenary



1923

## Harding Memorial

Flat Plate Printing

Perforated 11

Imperforate

Rotary Press Printing

Perforated 10



Flat Plate Printing  
Perforated 11

1924

## Huguenot-Walloon Tercentenary



MNH  
NOV 1924



# POSTAGE

Unwatermarked

1922-26

Perforated 11

*MH*

*nup*



*MH*



# POSTAGE

1923-25  
Flat Plate Printing  
Imperforate



Rotary Press Printing  
Perforated 11x10



1923-26  
Perforated 10



# POSTAGE

1923-32  
Rotary Press Printing  
COIL STAMPS  
Perforated 10 Vertically



Perforated 10 Horizontally



MNH

# POSTAGE

1925  
Flat Plate Printing  
Perforated 11

## Lexington-Concord



MNH



MNH



MNH

1925-28

## Norse-American Centennial



MH



MH

## Ericsson Memorial



MNH

## Sesquicentennial Exposition



MNH

## Burgoyne Campaign



MNH

## Vermont Sesquicentennial



MNH

## Battle of White Plains



MNH

## Valley Forge



MNH

# POSTAGE

1926-34

Rotary Press Printing  
Imperforate

Type of 1925-25

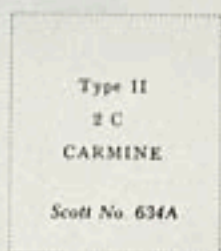
1½ C

YELLOW

BROWN

Scott No. 631

Perforated 11x10½, 10½x11



# POSTAGE

1929-31  
Flat Plate Printing  
Perforated 11

## Battle of Monmouth



MDF

## Hawaii Sesquicentennial



MH



MDF

Flat Plate Printing  
Perforated 11  
Aeronautics Conference



MDF



MDF

## George Rogers Clark



MDF

## Electric Light Golden Jubilee

Flat Plate Printing  
Perforated 11



Rotary Press Printing  
Perforated 11x10%



MH

Rotary Press Coil Stamp  
Perforated 10 Vertically



MH

# POSTAGE

1929

Rotary Press Printing

Perforated 11x10½



MH

659 MH



MH

MH



MH

MH

MH

679 0



676 0

674 0

# POSTAGE

## National Parks

1934

Flat Plate Printing

Perforated 11



June  
19/2003



POST

American Philatelic Society  
Atlantic City, New Jersey



PRINTED BY THE TREASURY DEPARTMENT,  
BUREAU OF ENGRAVING AND PRINTING



OMAHA, NEBRASKA, OCTOBER, 1934  
PLATE NUMBER 21941

Scott No. 751

Trans-Mississippi Philatelic Exhibition  
Omaha, Nebraska, October 8 to 13, 1934

UNDER AUTHORITY OF  
JAMES A. FARLEY, POSTMASTER GENERAL



IN COMPLIMENT TO THE AMERICAN PHILATELIC SOCIETY  
FOR ITS CONVENTION AND EXHIBITION.

ATLANTIC CITY, NEW JERSEY, AUGUST 1934  
PLATE NUMBER 21303

UNDER AUTHORITY OF  
JAMES A. FARLEY, POSTMASTER GENERAL



IN COMPLIMENT TO THE  
NATIONAL STAMP EXHIBITION OF 1934

NEW YORK, N.Y., FEBRUARY 10-18, 1934  
PLATE NUMBER 21184

768a 20.03 2014

# POSTAGE

1935-36

Rotary Press or Flat Plate Printing

Perforated 11x10½, 11, 10½x11

Boulder Dam



California-Pacific Exposition



Connecticut Tercentenary



Michigan Centenary



Susan B. Anthony



Texas Centennial



Rhode Island Tercentenary



Arkansas Centennial



Oregon Territory Centennial



Jane  
10/20/37

# POSTAGE

1938  
Rotary Press Printing  
Perforated 11x10½



*Handed*

Flat Plate Printing  
Perforated 11



*200*

# AIR POST STAMPS

1918

Flat Plate Printing

Perforated 11



Scott No. C1

16 C  
GREEN

Scott No. C2

24 C  
CARMINE ROSE  
AND BLUE

Scott No. C3

1923



Scott No. C5



Scott No. C6

1926-27



1927

Lindbergh



1928



# AIR POST STAMPS

Flat Plate Printing  
Perforated 11

1930



Rotary Press Printing  
Perforated 10½x11

1931-34



1933

Flat Plate Printing  
Perforated 11

Century of Progress



Scott No. C18

1935-37  
Trans-Pacific



# AIR POST STAMPS

1938  
Flat Plate Printing  
Perforated 11



1939  
Trans-Atlantic



1941-44  
Rotary Press Printing  
Perforated 11x10½



# SPECIAL DELIVERY STAMPS

Unwatermarked  
Perforated 12  
1888

1885



Scott No. E1



Scott No. E2

1893

Same as 1888  
10 C  
ORANGE

Scott No. E3

1894



100.00

Watermarked **USPS**

Perforated 12  
1908

1895

Same  
10 C  
BLUE

Scott No. E5



Scott No. E7

1902



Watermarked **USPS**

Perforated 12  
1911



Perforated 10  
1914

Same  
10 C  
ULTRAMARINE

Scott No. E9

Unwatermarked

Perforated 10  
1916

Same as 1902  
10 C  
PALE ULTRAMARINE

Scott No. E10

Perforated 11  
1917

Same as 1902  
10 C  
ULTRAMARINE

Scott No. E11

# SPECIAL DELIVERY STAMPS

1922-25

ROTARY PRESS PRINTING

Perforated 11



Perforated 11 x 10 1/4

1927



1931



1944



1951



1954



1957



Giori Press Printing

Perforated 11

1969



1971





# AIR POST SPECIAL DELIVERY STAMPS

Flat Plate Printing  
Perforated 11

1934



1936



## REGISTRATION STAMP

Watermarked USPS

1911



## CERTIFIED MAIL STAMP

Unwatermarked  
Rotary Press Printing  
Perforated 10½x11

1955



REPLACE THIS

# POSTAGE DUE

Unwatermarked  
Perforated 12  
1879



2 C  
BROWN

*Scott No. J2*

3 C  
BROWN

*Scott No. J3*

5 C  
BROWN

*Scott No. J4*

10 C  
BROWN

*Scott No. J5*

30 C  
BROWN

*Scott No. J7*

## SPECIAL PRINTING

Same  
1 C  
DEEP BROWN

*Scott No. J8*

2 C  
DEEP BROWN

*Scott No. J9*

3 C  
DEEP BROWN

*Scott No. J10*

5 C  
DEEP BROWN

*Scott No. J11*

10 C  
DEEP BROWN

*Scott No. J12*

30 C  
DEEP BROWN

*Scott No. J13*

50 C  
DEEP BROWN

*Scott No. J14*

# POSTAGE DUE

Unwatermarked  
Perforated 12  
1884-89  
Regular Issue

Same  
1 C  
RED BROWN  
  
*Scott No. 115*



3 C  
RED BROWN  
  
*Scott No. 117*

5 C  
RED BROWN  
  
*Scott No. 118*



30 C  
RED BROWN  
  
*Scott No. 120*

50 C  
RED BROWN  
  
*Scott No. 121*

1891-93



3 C  
BRIGHT CLARET  
  
*Scott No. 124*



10 C  
BRIGHT CLARET  
  
*Scott No. 126*

30 C  
BRIGHT CLARET  
  
*Scott No. 127*

50 C  
BRIGHT CLARET  
  
*Scott No. 128*

# POSTAGE DUE

1894

Unwatermarked

Perforated 12



Scott No. 129

2 C  
VERMILION

Scott No. 130



5 C  
DEEP CLARET

Scott No. 134

10 C  
DEEP CLARET

Scott No. 135

20 C  
DEEP CLARET

Scott No. 136

50 C  
DEEP CLARET

Scott No. 137

1895

Watermarked **USPS**

Perforated 12



3 C  
DEEP CLARET

Scott No. 140

5 C  
DEEP CLARET

Scott No. 141

10 C  
DEEP CLARET

Scott No. 142

20 C  
DEEP CLARET

Scott No. 143

50 C  
DEEP CLARET

Scott No. 144



145

# POSTAGE DUE

1910-12

Watermarked USPS

Perforated 12



3



3 C  
DEEP CLARET

Scott No. 147

5 C  
DEEP CLARET

Scott No. 148

10 C  
DEEP CLARET

Scott No. 149

30 C  
DEEP CLARET

Scott No. 150

1914-15

Perforated 10

Same  
1 C  
CARMINE  
LAKE  
Scott No. 152



3 C  
CARMINE  
LAKE

Scott No. 154



10 C  
CARMINE  
LAKE

Scott No. 156

30 C  
CARMINE  
LAKE

Scott No. 157

50 C  
CARMINE  
LAKE

Scott No. 158

1916

Unwatermarked

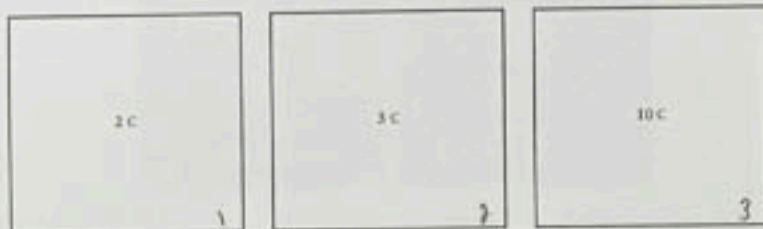
Perforated 10

Same  
1 C  
ROSE  
Scott No. 159

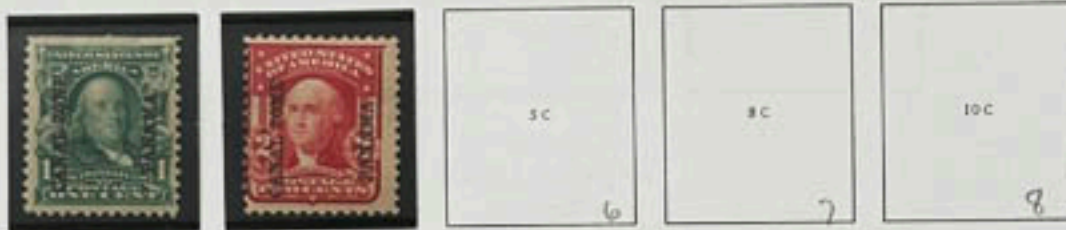


# Canal Zone

Map of Panama  
 "CANAL ZONE" Handstamp in Violet  
 1904



U.S. Issues of 1902-03 Overprinted  
 1904



Panama Map Issue Overprinted or Surcharged  
 1904-06



# Canal Zone

Panama Map Issue Surcharged  
1905-06



8 cts.

ON 50 C

8 cts

ON 50 C

SIMILAR, BUT  
PANAMA'S  
READING UP  
AND DOWN

Cordoba  
Overprint Reading Up  
1906-7

1 C

Balboa and Other Portraits  
Overprint Reading Down  
1906-07



1 C

10 C

# Canal Zone

Cordoba and Other Portraits  
Overprint Reading Down  
1909



Balboa and Other Portraits  
Overprint Reading Up  
1909-10



Map Surcharged  
1911

Map  
1914



NICE DALBOA  
#31 CANCEL



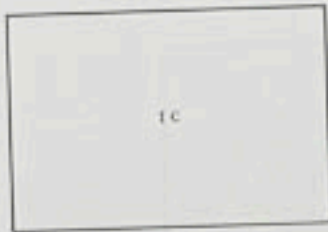
Balboa and Other Portraits  
Overprint Reading Up  
1912-16



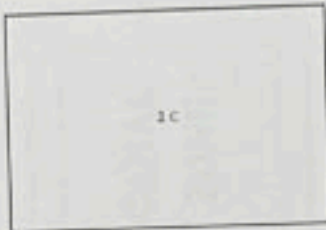


# Canal Zone

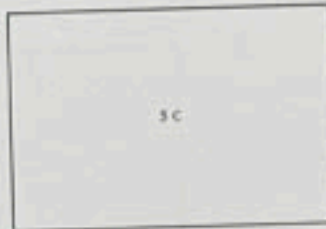
Map of Panama Canal and Other Designs  
1915



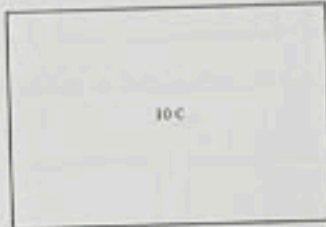
1c



2c



3c



10c

Balboa and Other Portraits  
Overprint Reading Up  
1915-20



1c



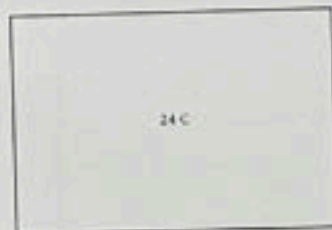
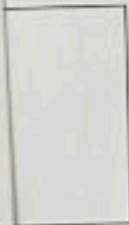
**CANAL  
ZONE**

2c



*3c  
Hull*

S. S. Panama and S. S. Cristobal  
1917



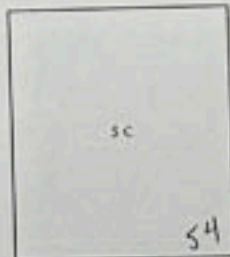
24c

Balboa and Other Portraits  
Overprint Reading Up  
1918-20



**CANAL  
ZONE**

2c



5c

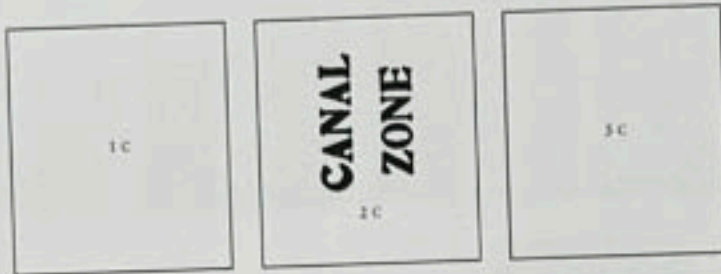
54

Style No. GK-104BK



# Canal Zone

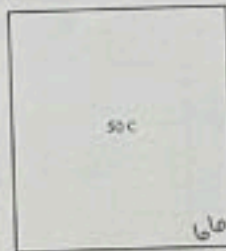
Balboa and Other Portraits  
Overprint Reading Up  
1920-21



Drydock at Balboa, Ship in Locks  
1920



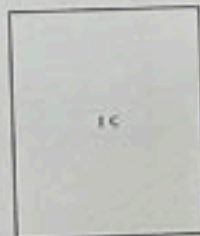
Jose Vallarino and Other Designs  
1921



60 c.

Overprint Reading Up  
1924

Coat of Arms  
1924



# Canal Zone

U.S. Issues of 1922-25 Overprinted  
1924-25



10c



12c



15c

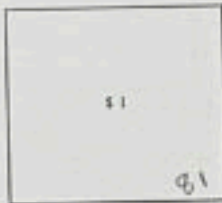
78



30c



50c

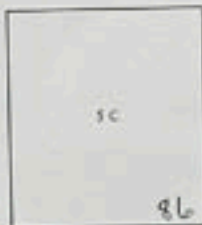


51

81

71 u.

U.S. Issues of 1922-25 Overprinted  
1925-26



5c

86



10c



12c



14c



15c

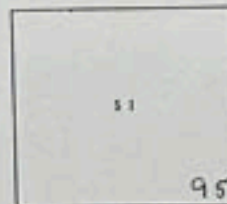
90



71 u



30c



51

95

# Canal Zone

U.S. Sesquicentennial  
Issue Overprinted  
1926



U.S. Issues of 1923-26  
Overprinted  
1927

U.S. Issues of 1926-27 Overprinted  
1927-31



Major General Gorgas and Other Designs  
1928-40



U.S. Issues of 1931-32 Overprinted  
1933

General Goethals  
1934

U.S. Issues of 1938 Overprinted  
1939



TOP COLOR CHANGE



# Canal Zone

Panama Canal Anniversary Issue  
1939



# Canal Zone

Major General Davis and Other Portraits

1946-49



Workers in  
Culebra Cut  
1951

Map of Biological Area  
and Coats-Mundi  
1948

Early Railroad  
1955



California Gold Rush  
1949



Gorgas Hospital  
1957

S. S. Ancon  
1958

Roosevelt Medal and Map  
1958



# Canal Zone

Boy Scouts  
1960



Girl Scouts  
1962



Thatcher Ferry Bridge  
1962



Administration Building  
1960



Coil Stamps  
1960-62



Goethals Memorial, Fort San Lorenzo  
1968-71



# Canal Zone

Portrait Type of 1928-48  
Coil Stamps  
1975



1c



10c



25c

Dredge Cascadas  
1976



Towing Locomotive, Ship in Lock  
1978



John F. Stevens  
1977



5c



# Canal Zone

AIR POST STAMPS

Regular Issues Surcharged  
1929



Regular Issues Surcharged  
1929



Gallard Cut  
1931-49



C9 U. NICE CANCEL

# Canal Zone

## AIR POST STAMPS

10th Anniversary of Air Mail Service and 25th Anniversary of Panama Canal  
1939



Globe and Wings  
1951



Globe and Wings  
1958-63



# Canal Zone

## AIR POST STAMPS

Emblem of US Army  
Caribbean School  
1961



Globe and Wing  
1963



Malaria Eradication  
Emblem and Mosquito  
1962



Alliance for Progress  
1963



50th Anniversary of the Panama Canal  
1964



# Canal Zone

AIR POST STAMPS

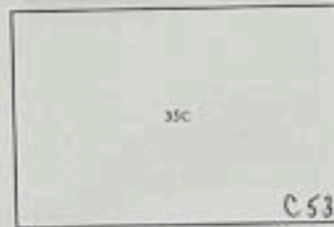
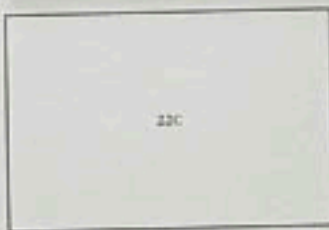
Seal and Jet Plane

1965



Seal and Jet Plane

1968-76



# Canal Zone

## POSTAGE DUE STAMPS

U.S. Postage Dues of 1917-23 Overprinted  
1924



U.S. Regular Issues of 1924 Overprinted "CANAL ZONE" and Additional Overprint  
1925



U.S. Postage Dues of 1917-23 Overprinted  
1925



Gaillard Cut Regular Issue Surcharged  
1929-30



# Canal Zone

POSTAGE DUE STAMPS

Canal Zone Seal  
1932-41

